

LAMPIRAN

Lampiran 1. Dokumentasi Penelitian



Dokumentasi 1. Pembuatan ekstrak air jamur grigit
(*Schizophyllum commune*)



Dokumentasi 2. Perendaman daging sapi dalam ekstrak air
jamur grigit (*Schizophyllum commune*)



Dokumentasi 3. Pengujian *Water Holding Capacity* (WHC) daging sapi yang direndam dalam ekstrak air jamur grigit (*Schizophyllum commune*)



Dokumentasi 4. Pengujian susut masak daging sapi yang direndam dalam ekstrak air jamur grigit (*Schizophyllum commune*)



Dokumentasi 5. Pengujian derajat keasaman (pH) daging sapi yang direndam dalam ekstrak air jamur grigit (*Schizophyllum commune*)

Lampiran 2. Analisa Statistik

Analisis Statistik Keempukan Daging Sapi

Tabel 1. Data nilai keempukan daging sapi yang direndam dalam ekstrak air jamur grigit (*Schizophyllum commune*)

Ulangan	Perlakuan						Total
	Ekstrak air jamur 0%	Papain 0,2%	Ekstrak air jamur 2,5%	Ekstrak air jamur 5%	Ekstrak air jamur 7,5%	Ekstrak air jamur 10%	
1	75,20	112,00	82,00	90,00	100,00	132,00	
2	79,00	110,00	84,20	88,20	105,00	130,00	
3	77,00	114,00	78,20	86,00	102,00	127,00	
4	80,00	108,20	82,20	91,00	105,00	125,00	
Total	311,2	444,2	326,60	355,2	412	514	2363,2
Rata-rata	77,8	111,05	81,65	88,8	103	128,5	

Descriptives

		N	Mean	Std. Deviation	Std. Error	95% Confidence Interval for Mean		Minimum	Maximum
						Lower Bound	Upper Bound		
Ulangan	Kontrol 0%	4	2,50	1,291	,645	,45	4,55	1	4
	Papain 0,2%	4	2,50	1,291	,645	,45	4,55	1	4
	Ekstrak air jamur 2,5%	4	2,50	1,291	,645	,45	4,55	1	4
	Ekstrak air jamur 2,5%	4	2,50	1,291	,645	,45	4,55	1	4
	Ekstrak air jamur 7,5%	4	2,50	1,291	,645	,45	4,55	1	4
	Ekstrak air jamur 10%	4	2,50	1,291	,645	,45	4,55	1	4
	Total	24	2,50	1,142	,233	2,02	2,98	1	4
Hasil	Kontrol 0%	4	77,8000	2,13542	1,06771	74,4021	81,1979	75,20	80,00
	Papain 0,2%	4	111,0500	2,50533	1,25266	107,0635	115,0365	108,20	114,00
	Ekstrak air jamur 2,5%	4	81,6500	2,50533	1,25266	77,6635	85,6365	78,20	84,20
	Ekstrak air jamur 2,5%	4	88,8000	2,19697	1,09848	85,3041	92,2959	86,00	91,00
	Ekstrak air jamur 7,5%	4	103,0000	2,44949	1,22474	99,1023	106,8977	100,00	105,00
	Ekstrak air jamur 10%	4	128,5000	3,10913	1,55456	123,5527	133,4473	125,00	132,00
	Total	24	98,4667	18,23734	3,72268	90,7657	106,1676	75,20	132,00

Tests of Homogeneity of Variances

		Levene Statistic	df1	df2	Sig.
Ulangan	Based on Mean	,000	5	18	1,000
	Based on Median	,000	5	18	1,000
	Based on Median and with adjusted df	,000	5	18,000	1,000
	Based on trimmed mean	,000	5	18	1,000
Hasil	Based on Mean	,319	5	18	,895
	Based on Median	,316	5	18	,897
	Based on Median and with adjusted df	,316	5	13,329	,895
	Based on trimmed mean	,321	5	18	,894

ANOVA

		Sum of Squares	df	Mean Square	F	Sig.
Ulangan	Between Groups	,000	5	,000	,000	1,000
	Within Groups	30,000	18	1,667		
	Total	30,000	23			
Hasil	Between Groups	7536,993	5	1507,399	240,500	<,001
	Within Groups	112,820	18	6,268		
	Total	7649,813	23			

Multiple Comparisons

Tukey HSD

Dependent Variable	(I) PerlakuanKonsentrasi	(J) PerlakuanKonsentrasi	Mean Difference (I-J)	Std. Error	Sig.	95% Confidence Interval			
						Lower Bound	Upper Bound		
Ulangan	Kontrol 0%	Papain 0,2%	,000	,913	1,000	-2,90	2,90		
		Ekstrak air jamur 2,5%	,000	,913	1,000	-2,90	2,90		
		Ekstrak air jamur 2,5%	,000	,913	1,000	-2,90	2,90		
		Ekstrak air jamur 7,5%	,000	,913	1,000	-2,90	2,90		
		Ekstrak air jamur 10%	,000	,913	1,000	-2,90	2,90		
		Papain 0,2%	Kontrol 0%	,000	,913	1,000	-2,90	2,90	
			Ekstrak air jamur 2,5%	,000	,913	1,000	-2,90	2,90	
			Ekstrak air jamur 7,5%	,000	,913	1,000	-2,90	2,90	
			Ekstrak air jamur 10%	,000	,913	1,000	-2,90	2,90	
		Ekstrak air jamur 2,5%	Kontrol 0%	,000	,913	1,000	-2,90	2,90	
			Papain 0,2%	,000	,913	1,000	-2,90	2,90	
			Ekstrak air jamur 2,5%	,000	,913	1,000	-2,90	2,90	
	Ekstrak air jamur 7,5%		,000	,913	1,000	-2,90	2,90		
	Ekstrak air jamur 2,5%	Kontrol 0%	,000	,913	1,000	-2,90	2,90		
		Papain 0,2%	,000	,913	1,000	-2,90	2,90		
		Ekstrak air jamur 2,5%	,000	,913	1,000	-2,90	2,90		
		Ekstrak air jamur 10%	,000	,913	1,000	-2,90	2,90		
	Ekstrak air jamur 7,5%	Kontrol 0%	,000	,913	1,000	-2,90	2,90		
		Papain 0,2%	,000	,913	1,000	-2,90	2,90		
		Ekstrak air jamur 2,5%	,000	,913	1,000	-2,90	2,90		
		Ekstrak air jamur 10%	,000	,913	1,000	-2,90	2,90		
	Ekstrak air jamur 10%	Kontrol 0%	,000	,913	1,000	-2,90	2,90		
		Papain 0,2%	,000	,913	1,000	-2,90	2,90		
		Ekstrak air jamur 2,5%	,000	,913	1,000	-2,90	2,90		
		Ekstrak air jamur 7,5%	,000	,913	1,000	-2,90	2,90		
	Hasil	Kontrol 0%	Papain 0,2%	-33,25000*	1,77028	<,001	-38,8760	-27,6240	
			Ekstrak air jamur 2,5%	-3,85000*	1,77028	,296	-9,4760	1,7760	
			Ekstrak air jamur 2,5%	-11,00000*	1,77028	<,001	-16,6260	-5,3740	
			Ekstrak air jamur 7,5%	-25,20000*	1,77028	<,001	-30,8260	-19,5740	
			Ekstrak air jamur 10%	-50,70000*	1,77028	<,001	-56,3260	-45,0740	
			Papain 0,2%	Kontrol 0%	33,25000*	1,77028	<,001	27,6240	38,8760
				Ekstrak air jamur 2,5%	29,40000*	1,77028	<,001	23,7740	35,0260
				Ekstrak air jamur 2,5%	22,25000*	1,77028	<,001	16,6240	27,8760
				Ekstrak air jamur 7,5%	8,05000*	1,77028	,003	2,4240	13,6760
			Ekstrak air jamur 2,5%	Ekstrak air jamur 10%	-17,45000*	1,77028	<,001	-23,0760	-11,8240
				Kontrol 0%	3,85000*	1,77028	,296	-1,7760	9,4760
				Papain 0,2%	-29,40000*	1,77028	<,001	-35,0260	-23,7740
		Ekstrak air jamur 2,5%		-7,15000*	1,77028	,008	-12,7760	-1,5240	
		Ekstrak air jamur 2,5%	Ekstrak air jamur 7,5%	-21,35000*	1,77028	<,001	-26,9760	-15,7240	
			Ekstrak air jamur 10%	-46,85000*	1,77028	<,001	-52,4760	-41,2240	
			Kontrol 0%	11,00000*	1,77028	<,001	5,3740	16,6260	
			Papain 0,2%	-22,25000*	1,77028	<,001	-27,8760	-16,6240	
		Ekstrak air jamur 7,5%	Ekstrak air jamur 2,5%	7,15000*	1,77028	,008	1,5240	12,7760	
			Ekstrak air jamur 7,5%	-14,20000*	1,77028	<,001	-19,8260	-8,5740	
			Ekstrak air jamur 10%	-39,70000*	1,77028	<,001	-45,3260	-34,0740	
			Kontrol 0%	25,20000*	1,77028	<,001	19,5740	30,8260	
		Ekstrak air jamur 7,5%	Papain 0,2%	-8,05000*	1,77028	,003	-13,6760	-2,4240	
			Ekstrak air jamur 2,5%	21,35000*	1,77028	<,001	15,7240	26,9760	
Ekstrak air jamur 2,5%			14,20000*	1,77028	<,001	8,5740	19,8260		
Ekstrak air jamur 10%			-25,50000*	1,77028	<,001	-31,1260	-19,8740		
Ekstrak air jamur 10%		Kontrol 0%	50,70000*	1,77028	<,001	45,0740	56,3260		
		Papain 0,2%	17,45000*	1,77028	<,001	11,8240	23,0760		
		Ekstrak air jamur 2,5%	46,85000*	1,77028	<,001	41,2240	52,4760		
		Ekstrak air jamur 2,5%	39,70000*	1,77028	<,001	34,0740	45,3260		
Ekstrak air jamur 7,5%		Ekstrak air jamur 7,5%	25,50000*	1,77028	<,001	19,8740	31,1260		

*. The mean difference is significant at the 0.05 level.

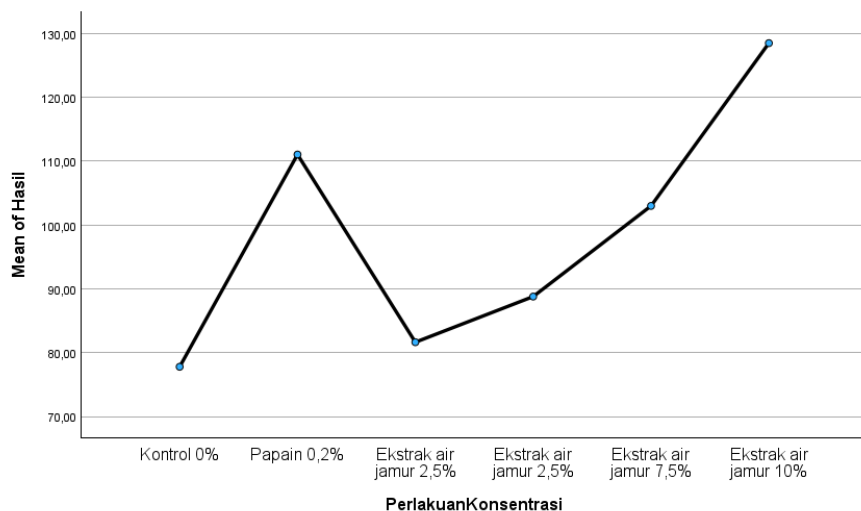
Hasil

Tukey HSD^a

PerlakuanKonsentrasi	N	Subset for alpha = 0.05				
		1	2	3	4	5
Kontrol 0%	4	77,8000				
Ekstrak air jamur 2,5%	4	81,6500				
Ekstrak air jamur 2,5%	4		88,8000			
Ekstrak air jamur 7,5%	4			103,0000		
Papain 0,2%	4				111,0500	
Ekstrak air jamur 10%	4					128,5000
Sig.		,296	1,000	1,000	1,000	1,000

Means for groups in homogeneous subsets are displayed.

a. Uses Harmonic Mean Sample Size = 4,000.



Analisis Statistik *Water Holding Capacity* (WHC) Daging Sapi

Tabel 2. Data *Water Holding Capacity* (WHC) daging sapi yang direndam dalam ekstrak air jamur grigit (*Schizophyllum commune*)

Ulangan	Perlakuan						Total
	Ekstrak air jamur 0%	Papain 0,2%	Ekstrak air jamur 2,5%	Ekstrak air jamur 5%	Ekstrak air jamur 7,5%	Ekstrak air jamur 10%	
1	22,59	39,15	24,08	32,42	33,07	40,18	
2	24,85	36,65	26,95	35,25	35,36	36,56	
3	25,15	38,67	27,15	31,97	36,20	40,50	
4	23,78	35,98	24,89	31,60	35,57	37,79	
Total	96,37	150,45	103,07	131,24	140,2	155,03	
Rata-rata	24,09	37,61	25,77	32,81	35,05	38,76	

Descriptives

		N	Mean	Std. Deviation	Std. Error	95% Confidence Interval for Mean		Minimum	Maximum
						Lower Bound	Upper Bound		
Ulangan	Kontrol 0%	4	2,50	1,291	,645	,45	4,55	1	4
	Papain 0,2%	4	2,50	1,291	,645	,45	4,55	1	4
	Ekstrak air jamur 2,5%	4	2,50	1,291	,645	,45	4,55	1	4
	Ekstrak air jamur 2,5%	4	2,50	1,291	,645	,45	4,55	1	4
	Ekstrak air jamur 7,5%	4	2,50	1,291	,645	,45	4,55	1	4
	Ekstrak air jamur 10%	4	2,50	1,291	,645	,45	4,55	1	4
	Total	24	2,50	1,142	,233	2,02	2,98	1	4
Hasil	Kontrol 0%	4	24,0925	1,16150	,58075	22,2443	25,9407	22,59	25,15
	Papain 0,2%	4	37,6125	1,53554	,76777	35,1691	40,0559	35,98	39,15
	Ekstrak air jamur 2,5%	4	25,7675	1,51957	,75978	23,3495	28,1855	24,08	27,15
	Ekstrak air jamur 2,5%	4	32,8100	1,66086	,83043	30,1672	35,4528	31,60	35,25
	Ekstrak air jamur 7,5%	4	35,0500	1,36741	,68370	32,8742	37,2258	33,07	36,20
	Ekstrak air jamur 7,5%	4	38,7575	1,89955	,94978	35,7349	41,7801	36,56	40,50
	Total	24	32,3483	5,87488	1,19920	29,8676	34,8291	22,59	40,50

Tests of Homogeneity of Variances

		Levene Statistic	df1	df2	Sig.
Ulangan	Based on Mean	,000	5	18	1,000
	Based on Median	,000	5	18	1,000
	Based on Median and with adjusted df	,000	5	18,000	1,000
	Based on trimmed mean	,000	5	18	1,000
Hasil	Based on Mean	,671	5	18	,651
	Based on Median	,486	5	18	,782
	Based on Median and with adjusted df	,486	5	9,206	,779
	Based on trimmed mean	,641	5	18	,672

ANOVA

		Sum of Squares	df	Mean Square	F	Sig.
Ulangan	Between Groups	,000	5	,000	,000	1,000
	Within Groups	30,000	18	1,667		
	Total	30,000	23			
Hasil	Between Groups	751,069	5	150,214	63,236	<,001
	Within Groups	42,758	18	2,375		
	Total	793,827	23			

Multiple Comparisons

Tukey HSD

Dependent Variable	(I) PerlakuanKonsentrasi	(J) PerlakuanKonsentrasi	Mean Difference (I-J)	Std. Error	Sig.	95% Confidence Interval		
						Lower Bound	Upper Bound	
Ulangan	Kontrol 0%	Papain 0,2%	,000	,913	1,000	-2,90	2,90	
		Ekstrak air jamur 2,5%	,000	,913	1,000	-2,90	2,90	
		Ekstrak air jamur 2,5%	,000	,913	1,000	-2,90	2,90	
		Ekstrak air jamur 7,5%	,000	,913	1,000	-2,90	2,90	
		Ekstrak air jamur 10%	,000	,913	1,000	-2,90	2,90	
	Papain 0,2%	Kontrol 0%	,000	,913	1,000	-2,90	2,90	
		Ekstrak air jamur 2,5%	,000	,913	1,000	-2,90	2,90	
		Ekstrak air jamur 2,5%	,000	,913	1,000	-2,90	2,90	
		Ekstrak air jamur 7,5%	,000	,913	1,000	-2,90	2,90	
		Ekstrak air jamur 10%	,000	,913	1,000	-2,90	2,90	
	Ekstrak air jamur 2,5%	Kontrol 0%	,000	,913	1,000	-2,90	2,90	
		Papain 0,2%	,000	,913	1,000	-2,90	2,90	
		Ekstrak air jamur 2,5%	,000	,913	1,000	-2,90	2,90	
		Ekstrak air jamur 7,5%	,000	,913	1,000	-2,90	2,90	
		Ekstrak air jamur 10%	,000	,913	1,000	-2,90	2,90	
	Ekstrak air jamur 2,5%	Kontrol 0%	,000	,913	1,000	-2,90	2,90	
		Papain 0,2%	,000	,913	1,000	-2,90	2,90	
		Ekstrak air jamur 2,5%	,000	,913	1,000	-2,90	2,90	
		Ekstrak air jamur 7,5%	,000	,913	1,000	-2,90	2,90	
		Ekstrak air jamur 10%	,000	,913	1,000	-2,90	2,90	
	Ekstrak air jamur 7,5%	Kontrol 0%	,000	,913	1,000	-2,90	2,90	
		Papain 0,2%	,000	,913	1,000	-2,90	2,90	
		Ekstrak air jamur 2,5%	,000	,913	1,000	-2,90	2,90	
		Ekstrak air jamur 2,5%	,000	,913	1,000	-2,90	2,90	
		Ekstrak air jamur 10%	,000	,913	1,000	-2,90	2,90	
	Ekstrak air jamur 10%	Kontrol 0%	,000	,913	1,000	-2,90	2,90	
		Papain 0,2%	,000	,913	1,000	-2,90	2,90	
		Ekstrak air jamur 2,5%	,000	,913	1,000	-2,90	2,90	
		Ekstrak air jamur 2,5%	,000	,913	1,000	-2,90	2,90	
		Ekstrak air jamur 7,5%	,000	,913	1,000	-2,90	2,90	
	Hasil	Kontrol 0%	Papain 0,2%	-13,52000 [*]	1,08983	<.001	-16,9835	-10,0565
			Ekstrak air jamur 2,5%	-1,67500 [*]	1,08983	,647	-5,1385	1,7885
			Ekstrak air jamur 2,5%	-8,71750 [*]	1,08983	<.001	-12,1810	-5,2540
			Ekstrak air jamur 7,5%	-10,95750 [*]	1,08983	<.001	-14,4210	-7,4940
			Ekstrak air jamur 10%	-14,66500 [*]	1,08983	<.001	-18,1285	-11,2015
		Papain 0,2%	Kontrol 0%	13,52000 [*]	1,08983	<.001	10,0565	16,9835
			Ekstrak air jamur 2,5%	11,84500 [*]	1,08983	<.001	8,3815	15,3085
			Ekstrak air jamur 2,5%	4,80250 [*]	1,08983	,004	1,3390	8,2660
			Ekstrak air jamur 7,5%	2,56250	1,08983	,225	-,9010	6,0260
			Ekstrak air jamur 10%	-1,14500	1,08983	,894	-4,6085	2,3185
		Ekstrak air jamur 2,5%	Kontrol 0%	1,67500	1,08983	,647	-1,7885	5,1385
			Papain 0,2%	-11,84500 [*]	1,08983	<.001	-15,3085	-8,3815
			Ekstrak air jamur 2,5%	-7,04250 [*]	1,08983	<.001	-10,5060	-3,5790
			Ekstrak air jamur 7,5%	-9,28250 [*]	1,08983	<.001	-12,7460	-5,8190
			Ekstrak air jamur 10%	-12,99000 [*]	1,08983	<.001	-16,4535	-9,5265
Ekstrak air jamur 2,5%		Kontrol 0%	8,71750 [*]	1,08983	<.001	5,2540	12,1810	
		Papain 0,2%	-4,80250 [*]	1,08983	,004	-8,2660	-1,3390	
		Ekstrak air jamur 2,5%	7,04250 [*]	1,08983	<.001	3,5790	10,5060	
		Ekstrak air jamur 7,5%	-2,24000	1,08983	,352	-5,7035	1,2235	
		Ekstrak air jamur 10%	-5,94750 [*]	1,08983	<.001	-9,4110	-2,4840	
Ekstrak air jamur 7,5%		Kontrol 0%	10,95750 [*]	1,08983	<.001	7,4940	14,4210	
		Papain 0,2%	-2,56250	1,08983	,225	-6,0260	,9010	
		Ekstrak air jamur 2,5%	9,28250 [*]	1,08983	<.001	5,8190	12,7460	
		Ekstrak air jamur 2,5%	2,24000	1,08983	,352	-1,2235	5,7035	
		Ekstrak air jamur 10%	-3,70750 [*]	1,08983	,032	-7,1710	-,2440	
Ekstrak air jamur 10%		Kontrol 0%	14,66500 [*]	1,08983	<.001	11,2015	18,1285	
		Papain 0,2%	1,14500	1,08983	,894	-2,3185	4,6085	
		Ekstrak air jamur 2,5%	12,99000 [*]	1,08983	<.001	9,5265	16,4535	
		Ekstrak air jamur 2,5%	5,94750 [*]	1,08983	<.001	2,4840	9,4110	
		Ekstrak air jamur 7,5%	3,70750 [*]	1,08983	,032	,2440	7,1710	

*. The mean difference is significant at the 0.05 level.

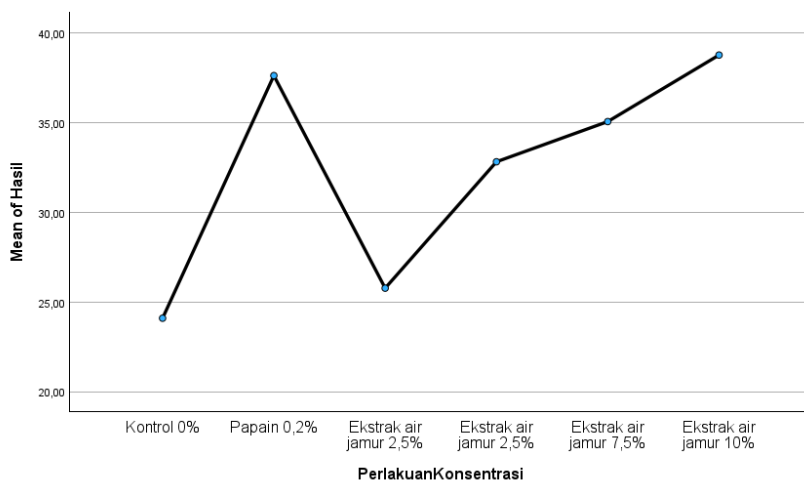
Hasil

Tukey HSD^a

PerlakuanKonsentrasi	N	Subset for alpha = 0.05			
		1	2	3	4
Kontrol 0%	4	24,0925			
Ekstrak air jamur 2,5%	4	25,7675			
Ekstrak air jamur 2,5%	4		32,8100		
Ekstrak air jamur 7,5%	4		35,0500	35,0500	
Papain 0,2%	4			37,6125	37,6125
Ekstrak air jamur 10%	4				38,7575
Sig.		,647	,352	,225	,894

Means for groups in homogeneous subsets are displayed.

a. Uses Harmonic Mean Sample Size = 4,000.



Analisa Statistik Susut Masak Daging Sapi

Tabel 3. Data susut masak daging sapi yang direndam dalam ekstrak air jamur grigit (*Schizophyllum commune*)

Ulangan	Perlakuan						Total
	Ekstrak air jamur 0%	Papain 0,2%	Ekstrak air jamur 2,5%	Ekstrak air jamur 5%	Ekstrak air jamur 7,5%	Ekstrak air jamur 10%	
1	45,60	58,35	47,59	50,22	54,18	56,98	
2	50,98	62,11	53,12	52,55	60,79	60,15	
3	44,88	65,40	49,37	57,16	57,84	64,10	
4	46,75	59,63	52,25	53,75	55,09	62,85	
Total	188,21	245,49	202,33	213,68	227,9	244,08	1321,69
Rata-rata	47,05	61,37	50,58	53,42	56,97	61,02	

Descriptives

		N	Mean	Std. Deviation	Std. Error	95% Confidence Interval for Mean		Minimum	Maximum
						Lower Bound	Upper Bound		
Ulangan	Kontrol 0%	4	2,50	1,291	,645	,45	4,55	1	4
	Papain 0,2%	4	2,50	1,291	,645	,45	4,55	1	4
	Ekstrak air jamur 2,5%	4	2,50	1,291	,645	,45	4,55	1	4
	Ekstrak air jamur 2,5%	4	2,50	1,291	,645	,45	4,55	1	4
	Ekstrak air jamur 7,5%	4	2,50	1,291	,645	,45	4,55	1	4
	Ekstrak air jamur 10%	4	2,50	1,291	,645	,45	4,55	1	4
	Total	24	2,50	1,142	,233	2,02	2,98	1	4
Hasil	Kontrol 0%	4	47,0525	2,72924	1,36462	42,7097	51,3953	44,88	50,98
	Papain 0,2%	4	61,3725	3,10572	1,55286	56,4306	66,3144	58,35	65,40
	Ekstrak air jamur 2,5%	4	50,5825	2,55895	1,27947	46,5106	54,6544	47,59	53,12
	Ekstrak air jamur 2,5%	4	53,4200	2,89214	1,44607	48,8180	58,0220	50,22	57,16
	Ekstrak air jamur 7,5%	4	56,9750	2,98148	1,49074	52,2308	61,7192	54,18	60,79
	Ekstrak air jamur 10%	4	61,0200	3,15773	1,57887	55,9953	66,0447	56,98	64,10
	Total	24	55,0704	5,95701	1,21597	52,5550	57,5858	44,88	65,40

Tests of Homogeneity of Variances

		Levene Statistic	df1	df2	Sig.
Ulangan	Based on Mean	,000	5	18	1,000
	Based on Median	,000	5	18	1,000
	Based on Median and with adjusted df	,000	5	18,000	1,000
	Based on trimmed mean	,000	5	18	1,000
Hasil	Based on Mean	,088	5	18	,993
	Based on Median	,102	5	18	,991
	Based on Median and with adjusted df	,102	5	15,239	,990
	Based on trimmed mean	,097	5	18	,992

ANOVA

		Sum of Squares	df	Mean Square	F	Sig.
Ulangan	Between Groups	,000	5	,000	,000	1,000
	Within Groups	30,000	18	1,667		
	Total	30,000	23			
Hasil	Between Groups	663,574	5	132,715	15,654	<,001
	Within Groups	152,602	18	8,478		
	Total	816,176	23			

Multiple Comparisons

Tukey HSD

Dependent Variable	(I) PerlakuanKonsentrasi	(J) PerlakuanKonsentrasi	Mean Difference (I-J)	Std. Error	Sig.	95% Confidence Interval		
						Lower Bound	Upper Bound	
Ulangan	Kontrol 0%	Papain 0,2%	,000	,913	1,000	-2,90	2,90	
		Ekstrak air jamur 2,5%	,000	,913	1,000	-2,90	2,90	
		Ekstrak air jamur 2,5%	,000	,913	1,000	-2,90	2,90	
		Ekstrak air jamur 7,5%	,000	,913	1,000	-2,90	2,90	
		Ekstrak air jamur 10%	,000	,913	1,000	-2,90	2,90	
	Papain 0,2%	Kontrol 0%	,000	,913	1,000	-2,90	2,90	
		Ekstrak air jamur 2,5%	,000	,913	1,000	-2,90	2,90	
		Ekstrak air jamur 2,5%	,000	,913	1,000	-2,90	2,90	
		Ekstrak air jamur 7,5%	,000	,913	1,000	-2,90	2,90	
		Ekstrak air jamur 10%	,000	,913	1,000	-2,90	2,90	
	Ekstrak air jamur 2,5%	Kontrol 0%	,000	,913	1,000	-2,90	2,90	
		Papain 0,2%	,000	,913	1,000	-2,90	2,90	
		Ekstrak air jamur 2,5%	,000	,913	1,000	-2,90	2,90	
		Ekstrak air jamur 7,5%	,000	,913	1,000	-2,90	2,90	
		Ekstrak air jamur 10%	,000	,913	1,000	-2,90	2,90	
	Ekstrak air jamur 2,5%	Kontrol 0%	,000	,913	1,000	-2,90	2,90	
		Papain 0,2%	,000	,913	1,000	-2,90	2,90	
		Ekstrak air jamur 2,5%	,000	,913	1,000	-2,90	2,90	
		Ekstrak air jamur 7,5%	,000	,913	1,000	-2,90	2,90	
		Ekstrak air jamur 10%	,000	,913	1,000	-2,90	2,90	
	Ekstrak air jamur 7,5%	Kontrol 0%	,000	,913	1,000	-2,90	2,90	
		Papain 0,2%	,000	,913	1,000	-2,90	2,90	
		Ekstrak air jamur 2,5%	,000	,913	1,000	-2,90	2,90	
		Ekstrak air jamur 2,5%	,000	,913	1,000	-2,90	2,90	
		Ekstrak air jamur 10%	,000	,913	1,000	-2,90	2,90	
	Ekstrak air jamur 10%	Kontrol 0%	,000	,913	1,000	-2,90	2,90	
		Papain 0,2%	,000	,913	1,000	-2,90	2,90	
		Ekstrak air jamur 2,5%	,000	,913	1,000	-2,90	2,90	
		Ekstrak air jamur 2,5%	,000	,913	1,000	-2,90	2,90	
		Ekstrak air jamur 7,5%	,000	,913	1,000	-2,90	2,90	
	Hasil	Kontrol 0%	Papain 0,2%	-14,32000*	2,05887	<,001	-20,8632	-7,7768
			Ekstrak air jamur 2,5%	-3,53000	2,05887	,540	-10,0732	3,0132
			Ekstrak air jamur 2,5%	-6,36750	2,05887	,059	-12,9107	1,757
			Ekstrak air jamur 7,5%	-9,92250*	2,05887	,002	-16,4657	-3,3793
			Ekstrak air jamur 10%	-13,96750*	2,05887	<,001	-20,5107	-7,4243
		Papain 0,2%	Kontrol 0%	14,32000*	2,05887	<,001	7,7768	20,8632
			Ekstrak air jamur 2,5%	10,79000*	2,05887	<,001	4,2468	17,3332
			Ekstrak air jamur 2,5%	7,95250*	2,05887	,012	1,4093	14,4957
			Ekstrak air jamur 7,5%	4,39750	2,05887	,314	-2,1457	10,9407
			Ekstrak air jamur 10%	,35250	2,05887	1,000	-6,1907	6,8957
		Ekstrak air jamur 2,5%	Kontrol 0%	3,53000	2,05887	,540	-3,0132	10,0732
			Papain 0,2%	-10,79000*	2,05887	<,001	-17,3332	-4,2468
			Ekstrak air jamur 2,5%	-2,83750	2,05887	,739	-9,3807	3,7057
			Ekstrak air jamur 7,5%	-6,39250	2,05887	,058	-12,9357	1,507
			Ekstrak air jamur 10%	-10,43750*	2,05887	<,001	-16,9807	-3,8943
Ekstrak air jamur 2,5%		Kontrol 0%	6,36750	2,05887	,059	-1,757	12,9107	
		Papain 0,2%	-7,95250*	2,05887	,012	-14,4957	-1,4093	
		Ekstrak air jamur 2,5%	2,83750	2,05887	,739	-3,7057	9,3807	
		Ekstrak air jamur 7,5%	-3,55500	2,05887	,533	-10,0982	2,9882	
		Ekstrak air jamur 10%	-7,60000*	2,05887	,018	-14,1432	-1,0568	
Ekstrak air jamur 7,5%		Kontrol 0%	9,92250*	2,05887	,002	3,3793	16,4657	
		Papain 0,2%	-4,39750	2,05887	,314	-10,9407	2,1457	
		Ekstrak air jamur 2,5%	6,39250	2,05887	,058	-1,507	12,9357	
		Ekstrak air jamur 2,5%	3,55500	2,05887	,533	-2,9882	10,0982	
		Ekstrak air jamur 10%	-4,04500	2,05887	,398	-10,5882	2,4982	
Ekstrak air jamur 10%		Kontrol 0%	13,96750*	2,05887	<,001	7,4243	20,5107	
		Papain 0,2%	-3,5250	2,05887	1,000	-6,8957	6,1907	
		Ekstrak air jamur 2,5%	10,43750*	2,05887	<,001	3,8943	16,9807	
		Ekstrak air jamur 2,5%	7,60000*	2,05887	,018	1,0568	14,1432	
		Ekstrak air jamur 7,5%	4,04500	2,05887	,398	-2,4982	10,5882	

*. The mean difference is significant at the 0.05 level.

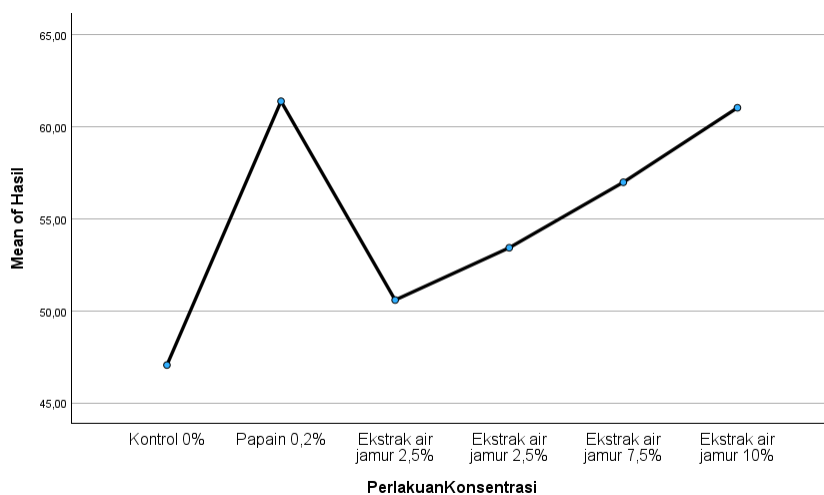
Hasil

Tukey HSD^a

PerlakuanKonsentrasi	N	Subset for alpha = 0.05		
		1	2	3
Kontrol 0%	4	47,0525		
Ekstrak air jamur 2,5%	4	50,5825	50,5825	
Ekstrak air jamur 2,5%	4	53,4200	53,4200	
Ekstrak air jamur 7,5%	4		56,9750	56,9750
Ekstrak air jamur 10%	4			61,0200
Papain 0,2%	4			61,3725
Sig.		,059	,058	,314

Means for groups in homogeneous subsets are displayed.

a. Uses Harmonic Mean Sample Size = 4,000.



Analisis Statistik Derajat Keasaman (pH) Daging Sapi

Tabel 4. Data derajat keasaman (pH) daging sapi yang direndam dalam ekstrak air jamur grigit (*Schizophyllum commune*)

Ulangan	Perlakuan						Total
	Ekstrak air jamur 0%	Papain 0,2%	Ekstrak air jamur 2,5%	Ekstrak air jamur 5%	Ekstrak air jamur 7,5%	Ekstrak air jamur 10%	
1	6,10	6,30	6,20	6,10	6,18	6,05	
2	6,20	6,25	6,10	6,09	6,15	6,10	
3	6,18	6,15	6,20	6,18	6,09	6,00	
4	6,10	6,20	6,15	6,20	6,05	5,98	
Total	24,58	24,90	24,65	24,57	24,47	24,13	147,30
Rata-rata	6,14	6,22	6,16	6,14	6,12	6,03	

Descriptives

		N	Mean	Std. Deviation	Std. Error	95% Confidence Interval for Mean		Minimum	Maximum
						Lower Bound	Upper Bound		
Ulangan	Kontrol 0%	4	2,50	1,291	,645	,45	4,55	1	4
	Papain 0,2%	4	2,50	1,291	,645	,45	4,55	1	4
	Ekstrak air jamur 2,5%	4	2,50	1,291	,645	,45	4,55	1	4
	Ekstrak air jamur 2,5%	4	2,50	1,291	,645	,45	4,55	1	4
	Ekstrak air jamur 7,5%	4	2,50	1,291	,645	,45	4,55	1	4
	Ekstrak air jamur 10%	4	2,50	1,291	,645	,45	4,55	1	4
	Total		24	2,50	1,142	,233	2,02	2,98	1
Hasil	Kontrol 0%	4	6,1450	,05260	,02630	6,0613	6,2287	6,10	6,20
	Papain 0,2%	4	6,2250	,06455	,03227	6,1223	6,3277	6,15	6,30
	Ekstrak air jamur 2,5%	4	6,1625	,04787	,02394	6,0863	6,2387	6,10	6,20
	Ekstrak air jamur 2,5%	4	6,1425	,05560	,02780	6,0540	6,2310	6,09	6,20
	Ekstrak air jamur 7,5%	4	6,1175	,05852	,02926	6,0244	6,2106	6,05	6,18
	Ekstrak air jamur 10%	4	6,0325	,05377	,02689	5,9469	6,1181	5,98	6,10
	Total		24	6,1375	,07663	,01564	6,1051	6,1699	5,98

Tests of Homogeneity of Variances

		Levene Statistic	df1	df2	Sig.
Ulangan	Based on Mean	,000	5	18	1,000
	Based on Median	,000	5	18	1,000
	Based on Median and with adjusted df	,000	5	18,000	1,000
	Based on trimmed mean	,000	5	18	1,000
Hasil	Based on Mean	,209	5	18	,954
	Based on Median	,182	5	18	,966
	Based on Median and with adjusted df	,182	5	13,036	,964
	Based on trimmed mean	,208	5	18	,955

ANOVA

		Sum of Squares	df	Mean Square	F	Sig.
Ulangan	Between Groups	,000	5	,000	,000	1,000
	Within Groups	30,000	18	1,667		
	Total	30,000	23			
Hasil	Between Groups	,079	5	,016	5,097	,004
	Within Groups	,056	18	,003		
	Total	,135	23			

Multiple Comparisons

Dependent Variable	(0) Postulokomparasi	(1) Postulokomparasi	Mean			95% Confidence Interval		
			Difference 0.0	Std. Error	Sig.	Lower Bound	Upper Bound	
Ulangan	Tukey HSD	Kontrol 0%	Papain 0.2%	.000	.813	1.000	-.290	2.90
			Ekstrak air jamur 2.5%	.000	.813	1.000	-.290	2.90
			Ekstrak air jamur 7.5%	.000	.813	1.000	-.290	2.90
	Papain 0.2%	Kontrol 0%	Ekstrak air jamur 2.5%	.000	.813	1.000	-.290	2.90
			Ekstrak air jamur 7.5%	.000	.813	1.000	-.290	2.90
			Ekstrak air jamur 10%	.000	.813	1.000	-.290	2.90
	Ekstrak air jamur 2.5%	Kontrol 0%	Papain 0.2%	.000	.813	1.000	-.290	2.90
			Ekstrak air jamur 7.5%	.000	.813	1.000	-.290	2.90
			Ekstrak air jamur 10%	.000	.813	1.000	-.290	2.90
	Ekstrak air jamur 7.5%	Kontrol 0%	Papain 0.2%	.000	.813	1.000	-.290	2.90
			Ekstrak air jamur 2.5%	.000	.813	1.000	-.290	2.90
			Ekstrak air jamur 10%	.000	.813	1.000	-.290	2.90
Ekstrak air jamur 10%	Kontrol 0%	Papain 0.2%	.000	.813	1.000	-.290	2.90	
		Ekstrak air jamur 2.5%	.000	.813	1.000	-.290	2.90	
		Ekstrak air jamur 7.5%	.000	.813	1.000	-.290	2.90	
LSD	Kontrol 0%	Papain 0.2%	Ekstrak air jamur 2.5%	.000	.813	1.000	-1.92	1.92
			Ekstrak air jamur 7.5%	.000	.813	1.000	-1.92	1.92
			Ekstrak air jamur 10%	.000	.813	1.000	-1.92	1.92
	Papain 0.2%	Kontrol 0%	Ekstrak air jamur 2.5%	.000	.813	1.000	-1.92	1.92
			Ekstrak air jamur 7.5%	.000	.813	1.000	-1.92	1.92
			Ekstrak air jamur 10%	.000	.813	1.000	-1.92	1.92
	Ekstrak air jamur 2.5%	Kontrol 0%	Papain 0.2%	.000	.813	1.000	-1.92	1.92
			Ekstrak air jamur 7.5%	.000	.813	1.000	-1.92	1.92
			Ekstrak air jamur 10%	.000	.813	1.000	-1.92	1.92
	Ekstrak air jamur 7.5%	Kontrol 0%	Papain 0.2%	.000	.813	1.000	-1.92	1.92
			Ekstrak air jamur 2.5%	.000	.813	1.000	-1.92	1.92
			Ekstrak air jamur 10%	.000	.813	1.000	-1.92	1.92
Ekstrak air jamur 10%	Kontrol 0%	Papain 0.2%	.000	.813	1.000	-1.92	1.92	
		Ekstrak air jamur 2.5%	.000	.813	1.000	-1.92	1.92	
		Ekstrak air jamur 7.5%	.000	.813	1.000	-1.92	1.92	
Hasi	Tukey HSD	Kontrol 0%	Papain 0.2%	-.0600	.0361	.364	-.2052	.0852
			Ekstrak air jamur 2.5%	-.0110	.0361	.997	-.1427	.1207
			Ekstrak air jamur 7.5%	-.0210	.0361	.900	-.1677	.1257
	Papain 0.2%	Kontrol 0%	Ekstrak air jamur 2.5%	-.1120	.0361	.003	-.1977	-.3177
			Ekstrak air jamur 7.5%	-.0600	.0361	.364	-.1462	.0852
			Ekstrak air jamur 10%	-.0620	.0361	.617	-.1627	.1877
	Ekstrak air jamur 2.5%	Kontrol 0%	Ekstrak air jamur 2.5%	-.0620	.0361	.333	-.1427	.1877
			Ekstrak air jamur 7.5%	-.1070	.0361	.118	-.1977	-.3127
			Ekstrak air jamur 10%	-.1920	.0361	.001	-.2877	-.3177
	Ekstrak air jamur 7.5%	Kontrol 0%	Papain 0.2%	-.0110	.0361	.997	-.1427	.1207
			Ekstrak air jamur 2.5%	-.0620	.0361	.617	-.1627	.1877
			Ekstrak air jamur 10%	-.0200	.0361	.966	-.1452	.1052
Ekstrak air jamur 10%	Kontrol 0%	Papain 0.2%	-.0210	.0361	.880	-.1677	.1257	
		Ekstrak air jamur 2.5%	-.0210	.0361	.966	-.1452	.1052	
		Ekstrak air jamur 7.5%	-.0210	.0361	.966	-.1452	.1052	
Ekstrak air jamur 2.5%	Kontrol 0%	Papain 0.2%	-.0400	.0361	.187	-.1702	.0802	
		Ekstrak air jamur 7.5%	-.0500	.0361	.087	-.1902	.1002	
		Ekstrak air jamur 10%	-.0600	.0361	.304	-.2002	.1102	
Ekstrak air jamur 7.5%	Kontrol 0%	Papain 0.2%	-.1120	.0361	.003	-.1977	-.3177	
		Ekstrak air jamur 2.5%	-.1920	.0361	.001	-.2877	-.3177	
		Ekstrak air jamur 10%	-.1300	.0361	.039	-.2652	-.0848	
Ekstrak air jamur 10%	Kontrol 0%	Papain 0.2%	-.1100	.0361	.055	-.2052	.0152	
		Ekstrak air jamur 2.5%	-.0600	.0361	.364	-.1462	.0852	
		Ekstrak air jamur 7.5%	-.0210	.0361	.966	-.1452	.1052	
LSD	Kontrol 0%	Papain 0.2%	Ekstrak air jamur 2.5%	-.0110	.0361	.967	-.1428	.0828
			Ekstrak air jamur 7.5%	-.0210	.0361	.900	-.1678	.1228
			Ekstrak air jamur 10%	-.0210	.0361	.900	-.1678	.1228
	Papain 0.2%	Kontrol 0%	Ekstrak air jamur 2.5%	-.0620	.0361	.618	-.1628	.1828
			Ekstrak air jamur 7.5%	-.0620	.0361	.618	-.1628	.1828
			Ekstrak air jamur 10%	-.0620	.0361	.618	-.1628	.1828
	Ekstrak air jamur 2.5%	Kontrol 0%	Papain 0.2%	-.0400	.0361	.188	-.1728	.0828
			Ekstrak air jamur 7.5%	-.0500	.0361	.088	-.1928	.1028
			Ekstrak air jamur 10%	-.0600	.0361	.304	-.2028	.1128
	Ekstrak air jamur 7.5%	Kontrol 0%	Papain 0.2%	-.1120	.0361	.003	-.1978	-.3178
			Ekstrak air jamur 2.5%	-.1920	.0361	.001	-.2878	-.3178
			Ekstrak air jamur 10%	-.1300	.0361	.039	-.2653	-.0803
Ekstrak air jamur 10%	Kontrol 0%	Papain 0.2%	-.1100	.0361	.051	-.1853	.0803	
		Ekstrak air jamur 2.5%	-.0600	.0361	.368	-.1428	.0828	
		Ekstrak air jamur 7.5%	-.0210	.0361	.914	-.1478	.1078	
Ekstrak air jamur 2.5%	Kontrol 0%	Papain 0.2%	-.0210	.0361	.914	-.1478	.1078	
		Ekstrak air jamur 7.5%	-.0210	.0361	.914	-.1478	.1078	
		Ekstrak air jamur 10%	-.0210	.0361	.914	-.1478	.1078	
Ekstrak air jamur 7.5%	Kontrol 0%	Papain 0.2%	-.0400	.0361	.188	-.1728	.0828	
		Ekstrak air jamur 2.5%	-.0500	.0361	.088	-.1928	.1028	
		Ekstrak air jamur 10%	-.0600	.0361	.304	-.2028	.1128	
Ekstrak air jamur 10%	Kontrol 0%	Papain 0.2%	-.1120	.0361	.003	-.1978	-.3178	
		Ekstrak air jamur 2.5%	-.1920	.0361	.001	-.2878	-.3178	
		Ekstrak air jamur 7.5%	-.1300	.0361	.039	-.2653	-.0803	
Ekstrak air jamur 2.5%	Kontrol 0%	Papain 0.2%	-.1100	.0361	.051	-.1853	.0803	
		Ekstrak air jamur 7.5%	-.0600	.0361	.368	-.1428	.0828	
		Ekstrak air jamur 10%	-.0210	.0361	.914	-.1478	.1078	
Ekstrak air jamur 7.5%	Kontrol 0%	Papain 0.2%	-.0210	.0361	.914	-.1478	.1078	
		Ekstrak air jamur 2.5%	-.0210	.0361	.914	-.1478	.1078	
		Ekstrak air jamur 10%	-.0210	.0361	.914	-.1478	.1078	

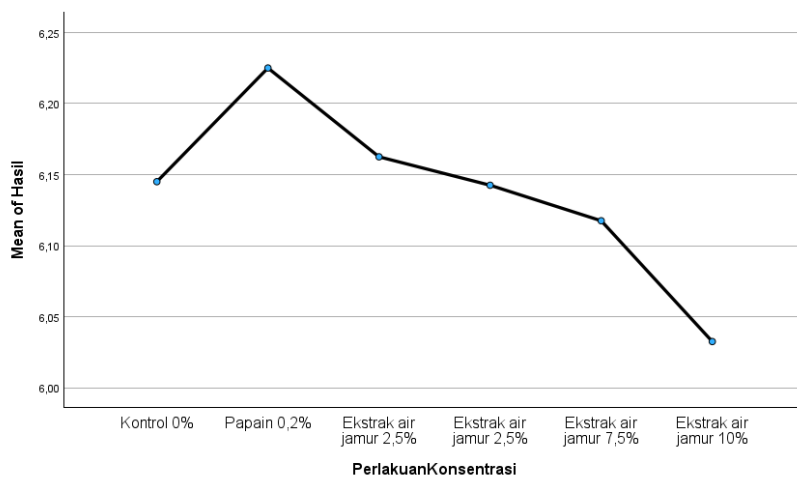
* The mean difference is significant at the 0.05 level.

Hasil

		N	Subset for alpha = 0.05	
PerlakuanKonsentrasi			1	2
Tukey HSD ^a	Ekstrak air jamur 10%	4	6,0325	
	Ekstrak air jamur 7,5%	4	6,1175	6,1175
	Ekstrak air jamur 2,5%	4	6,1425	6,1425
	Kontrol 0%	4	6,1450	6,1450
	Ekstrak air jamur 2,5%	4		6,1625
	Papain 0,2%	4		6,2250
	Sig.			,093

Means for groups in homogeneous subsets are displayed.

a. Uses Harmonic Mean Sample Size = 4,000.



Lampiran 3. Hasil penilaian panelis

Penilaian Organoleptik

Tabel 5. Data penilaian organoleptik daging sapi yang direndam dalam ekstrak air jamur grigit (*Schizophyllum commune*) konsentrasi 0%

Panelis	Konsentrasi	Skor Organoleptik		
		Warna	Rasa	Aroma
1	0	7	7	5
2	0	7	7	5
3	0	7	7	5
4	0	7	7	5
5	0	7	6	5
6	0	7	7	5
7	0	7	6	5
8	0	7	7	5
9	0	7	7	5
10	0	7	7	5
11	0	7	7	5
12	0	7	6	5
13	0	7	6	5
14	0	7	6	5
15	0	7	8	5
16	0	7	8	5
17	0	7	5	5
18	0	7	5	5
19	0	7	5	5
20	0	7	5	5
Rata-rata		7	6,45	5

Penilaian Organoleptik

Tabel 6. Data penilaian organoleptik daging sapi yang direndam dalam ekstrak air jamur grigit (*Schizophyllum commune*) konsentrasi papain 0,2%

Panelis	Konsentrasi	Skor Organoleptik		
		Warna	Rasa	Aroma
1	Papain 0,2	7	6	5
2	Papain 0,2	7	6	5
3	Papain 0,2	7	6	5
4	Papain 0,2	7	6	5
5	Papain 0,2	7	6	5
6	Papain 0,2	7	6	5
7	Papain 0,2	7	6	5
8	Papain 0,2	7	6	5
9	Papain 0,2	7	6	5
10	Papain 0,2	7	7	6
11	Papain 0,2	7	7	6
12	Papain 0,2	7	7	6
13	Papain 0,2	7	7	6
14	Papain 0,2	7	7	6
15	Papain 0,2	7	7	6
16	Papain 0,2	7	7	6
17	Papain 0,2	7	7	6
18	Papain 0,2	7	6	6
19	Papain 0,2	7	6	6
20	Papain 0,2	7	6	6
Rata-rata		7	6,4	5,5

Penilaian Organoleptik

Tabel 7. Data penilaian organoleptik daging sapi yang direndam dalam ekstrak air jamur grigit (*Schizophyllum commune*) konsentrasi 2,5%

Panelis	Konsentrasi	Skor Organoleptik		
		Warna	Rasa	Aroma
1	2,5	8	7	7
2	2,5	8	8	7
3	2,5	8	7	7
4	2,5	8	8	7
5	2,5	8	8	7
6	2,5	8	8	7
7	2,5	8	8	7
8	2,5	8	8	7
9	2,5	8	8	7
10	2,5	8	8	7
11	2,5	8	7	7
12	2,5	8	7	7
13	2,5	8	7	7
14	2,5	8	7	7
15	2,5	8	7	7
16	2,5	8	9	7
17	2,5	8	9	7
18	2,5	8	8	7
19	2,5	8	8	7
20	2,5	8	8	7
Rata-rata		8	7,75	7

Penilaian Organoleptik

Tabel 8. Data penilaian organoleptik daging sapi yang direndam dalam ekstrak air jamur grigit (*Schizophyllum commune*) konsentrasi 5%

Panelis	Konsentrasi	Skor Organoleptik		
		Warna	Rasa	Aroma
1	5	8	7	6
2	5	8	7	6
3	5	8	7	6
4	5	8	7	6
5	5	8	7	6
6	5	8	7	6
7	5	8	5	6
8	5	8	5	6
9	5	8	5	5
10	5	8	5	5
11	5	8	5	5
12	5	8	5	5
13	5	8	7	5
14	5	8	7	5
15	5	8	6	5
16	5	9	6	5
17	5	9	6	5
18	5	9	6	7
19	5	9	6	7
20	5	8	6	7
Rata-rata		8,2	6,1	5,7

Penilaian Organoleptik

Tabel 9. Data penilaian organoleptik daging sapi yang direndam dalam ekstrak air jamur grigit (*Schizophyllum commune*) konsentrasi 7,5%

Panelis	Konsentrasi	Skor Organoleptik		
		Warna	Rasa	Aroma
1	7,5	8	5	5
2	7,5	8	5	5
3	7,5	8	5	5
4	7,5	8	5	5
5	7,5	8	5	5
6	7,5	8	5	5
7	7,5	8	5	6
8	7,5	9	5	6
9	7,5	9	5	6
10	7,5	9	5	6
11	7,5	9	6	6
12	7,5	9	6	6
13	7,5	9	6	6
14	7,5	9	6	6
15	7,5	9	6	6
16	7,5	9	6	6
17	7,5	9	6	6
18	7,5	9	6	5
19	7,5	9	6	5
20	7,5	9	6	5
Rata-rata		8,65	5,5	5.55

Penilaian Organoleptik

Tabel 10. Data penilaian organoleptik daging sapi yang direndam dalam ekstrak air jamur grigit (*Schizophyllum commune*) konsentrasi 10%

Panelis	Konsentrasi	Skor Organoleptik		
		Warna	Rasa	Aroma
1	10	9	6	5
2	10	9	6	5
3	10	9	6	5
4	10	9	6	5
5	10	9	6	5
6	10	9	4	5
7	10	8	4	5
8	10	8	4	5
9	10	8	5	5
10	10	8	4	5
11	10	8	5	5
12	10	9	4	4
13	10	9	6	4
14	10	9	5	4
15	10	9	5	4
16	10	9	5	4
17	10	9	4	4
18	10	9	4	4
19	10	9	4	4
20	10	8	4	4
Rata-rata		8,7	4,85	4,55



PROGRAM STUDI BIOLOGI
FAKULTAS SAINS DAN TEKNOLOGI
UNIVERSITAS PGRI ADI BUANA SURABAYA
KAMPUS: Jl. Dukuh Menanggal XII, Telp. (031)8281183,
8281181, Surabaya 60234

BUKTI BIMBINGAN SKRIPSI

Nama : Yola Amanda Astuti
NIM : 202500014
Judul Skripsi : Karakteristik Keempukan dan Sifat Organoleptik
Daging Sapi yang Dimarinasi Ekstrak Air Jamur
Grigit (*Schizophyllum commune*)
Dosen Pembimbing : Prof. Dr. Ir. Tatang Sopandi, M.P.

No.	Tanggal	Materi Bimbingan	Pembimbing
1.	10 Juli 2024	Bimbingan BAB V	
2.	12 Juli 2024	Revisi BAB V	
3.	15 Juli 2024	Bimbingan BAB VI & BAB VII	
4.	17 Juli 2024	Revisi BAB VI & BAB VII	
5.	19 Juli 2024	Bimbingan BAB I – VII	
6.	20 Juli 2024	Revisi BAB I – VII	
7.	21 Juli 2024	Bimbingan BAB I- Lampiran	
8.	22 Juli 2024	ACC Naskah Skripsi	

Mengetahui,

Dekan FST

Dosen Pembimbing

Prof. Dr. Ir. Tatang Sopandi, M.P.
NIP. 196307041993111001

Prof. Dr. Ir. Tatang Sopandi, M.P.
NIP. 196307041993111001



PROGRAM STUDI BIOLOGI
FAKULTAS SAINS DAN TEKNOLOGI
UNIVERSITAS PGRI ADI BUANA SURABAYA
KAMPUS: Jl. Dukuh Menanggal XII, Telp. (031)8281183,
8281181, Surabaya 60234

PERSETUJUAN PERBAIKAN SKRIPSI

Dosen Pembimbing dan Penguji di bawah ini telah menyetujui atas perbaikan naskah kerangka acuan skripsi yang dilakukan oleh:

Nama : Yola Amanda Astuti
NIM : 202500014
Judul Skripsi : Karakteristik Keempukan dan Sifat Organoleptik Daging Sapi yang Dimarinasi Ekstrak Air Jamur Grigit (*Schizophyllum commune*)

DOSEN PEMBIMBING

No.	Nama	Tanda Tangan	Tanggal Persetujuan
1.	Prof. Dr. Ir. Tatang Sopandi, M.P.		31 Juli 2024

DOSEN PENGUJI

No.	Nama	Tanda Tangan	Tanggal Persetujuan
1.	Prof. Dr. Ir. Pungky Slamet W.K., M.Si.		31 Juli 2024

*Catatan:

Naskah skripsi dapat digandakan dan dijilid, apabila mahasiswa yang bersangkutan telah mendapat persetujuan dari dosen pembimbing dan penguji.